

Quetico Outfitters

Nym, Rawn, French 33 Miles - QueticoOutfitters.com

One well maintained portage is all it takes to get onto this amazing trip thus making this trip accessible to kayakers and paddlers who prefer fewer portages. Batchewaung lake and the pickerel narrows never fail to disappoint with their amazing vistas and spectacular sunsets. This route allows you to set your own pace, explore the bays and islands that make Quetico so special and just "Get to know our Quetico".

Options:

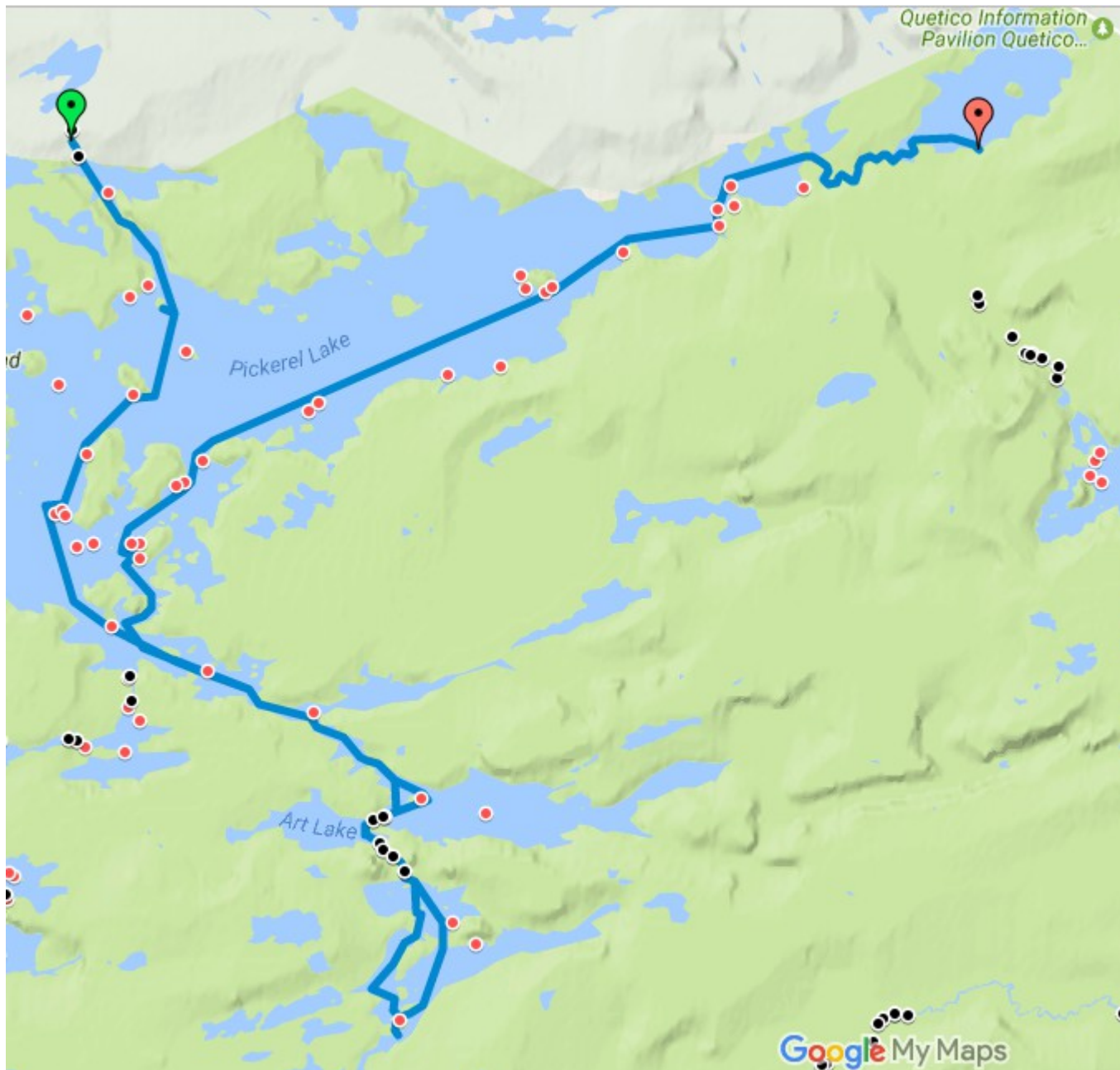
- Change the route and enter by French and spend a few days on Rawn / Buckingham lake. Exit at Stanton.
- Stay on Batchewaung and the Pickerel narrows and exit via Nym.

Highlights:

- Amazing island sites
- We can park your car at French lake for a quick shower before heading home.
- Great fishing and views through Batchewaung lake and the Pickerel Narrows
- Add a couple of days to explore Rawn, Art and Buckingham Lakes.
- Total Distance: 33 Miles
- Total Time: 16 hours
- 1 Portage

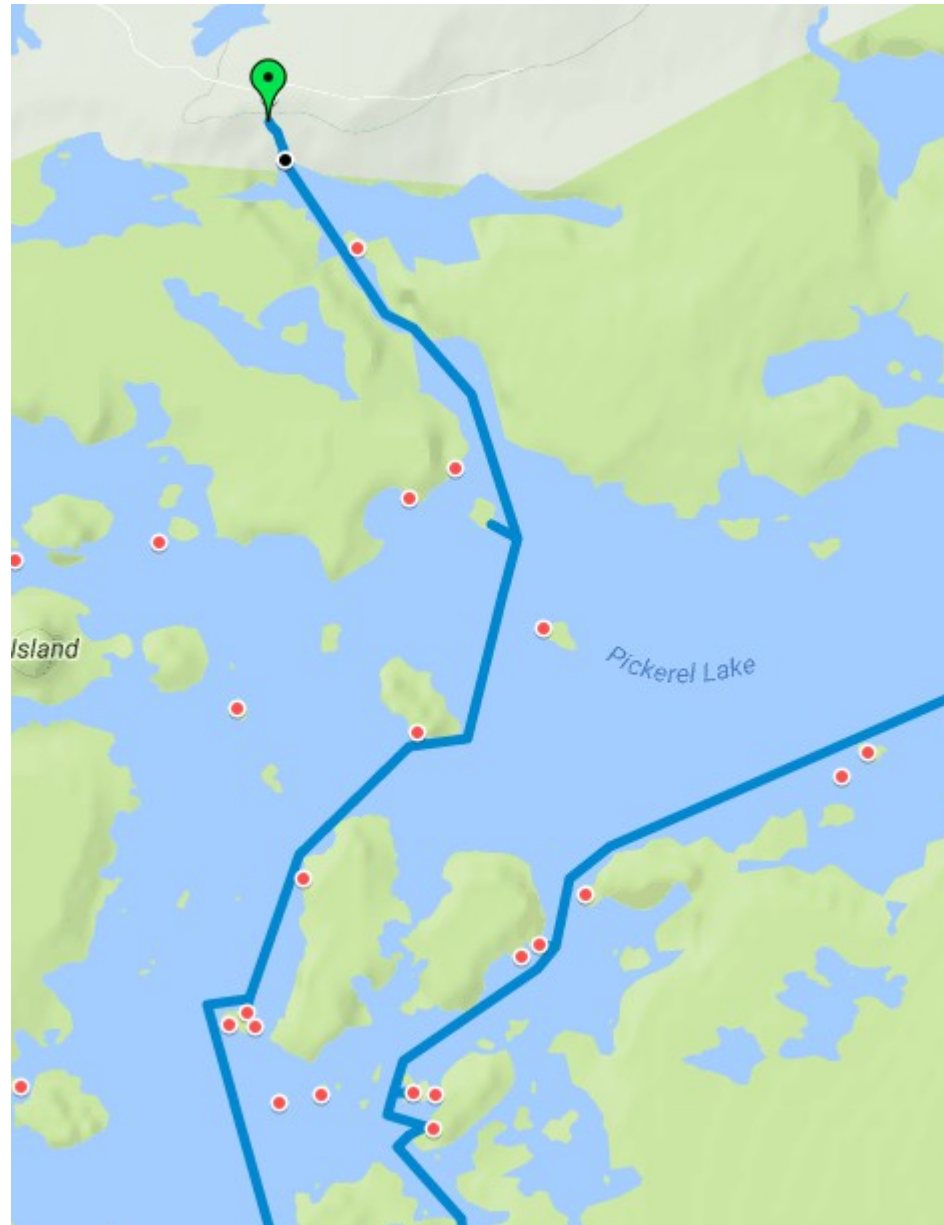
Quetico Outfitters

Nym, Rawn, French 33 Miles - QueticoOutfitters.com



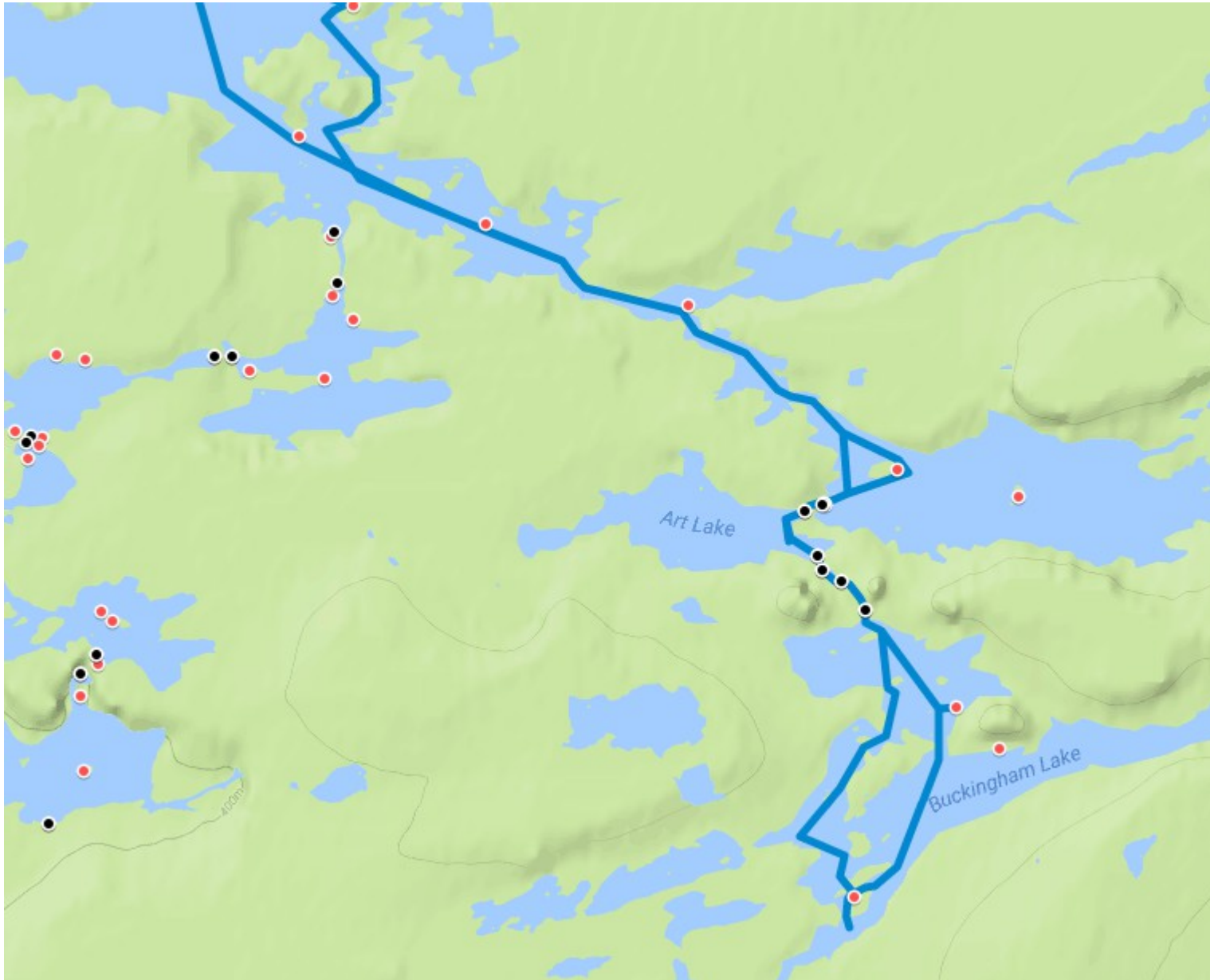
Quetico Outfitters

Nym, Rawn, French 33 Miles - QueticoOutfitters.com



Quetico Outfitters

Nym, Rawn, French 33 Miles - QueticoOutfitters.com



Quetico Outfitters

Nym, Rawn, French 33 Miles - QueticoOutfitters.com



Quetico Outfitters

Nym, Rawn, French 33 Miles - QueticoOutfitters.com



Quetico Outfitters

Nym, Rawn, French 33 Miles - QueticoOutfitters.com

